

TERMINATION INSTRUCTIONS



Low Profile Modules



771836 (Cat 5e Euro White)

787117 (Cat 5e Euro Black)

779332 (Cat 6 Euro White)

789835 (Cat 6 Euro Black)

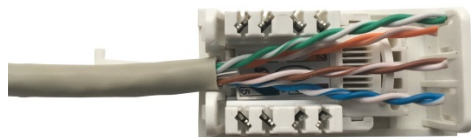
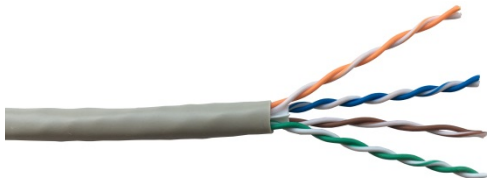
772412 (Cat 5e LJ6C White)

779331 (Cat 6 LJ6C White)

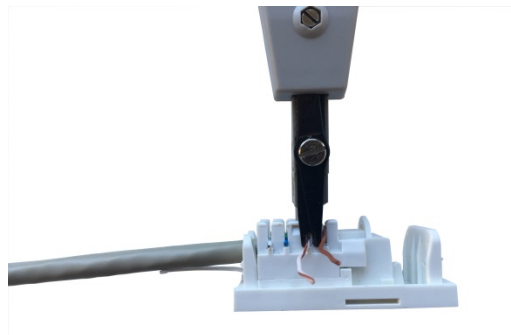
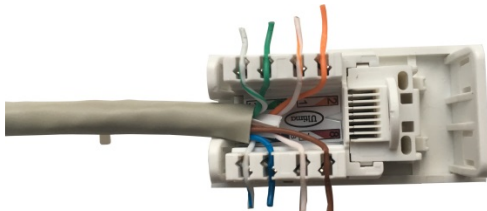
789845 (Cat 6 LJ6C Black)

796053 (Cat 6 Euro White)

1. Remove approximately 50mm of the cable sheath and separate the 4 pairs. For Cat 6 cables carefully cut back the central plastic separator flush with the cable sheath.
2. After deciding if cable entry will be at the top or bottom of the module place the cable so that the sheath end is close to the nearest IDC slots.

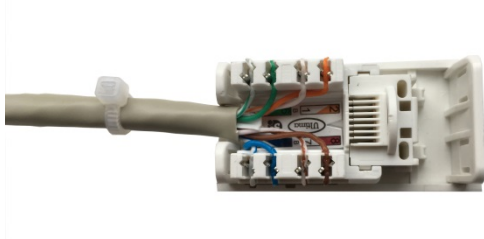


3. Dress the wires in to the appropriate coloured IDC slots. Ensure that the cable pair twists are maintained as close as possible to the point of termination.
4. Punch down the wires using a Krone type or 110 style termination tool.



Low Profile Modules

5. When all of the wires have been terminated secure the cable to the strain relief tag or loop using a cable tie, taking care not to over tighten it.



6. Fit the wire retention cap.



Recommended Tools

Part Number	Description	Purpose
786575	Side Cutters - 145mm	Cutting cable to length
993874	Cyclops Stripper	Cutting sheath
785404	Electronic Flush Cutters	Trimming cable tie
770218	Inserter Wire 110	Terminating and trimming wires
773118	Inserter Wire 2A	Terminating and trimming wires