

SPS HOME

Off-line APFC multi-socket UPS 650 VA and 850 VA



SPS HOME: Ideal multi-socket solution for office or home environments

Salicru's **SPS HOME** series UPSs boast off-line technology, are available in 650 and 850 VA powers, feature a 6-socket design and have the capacity to protect loads with active power factor correction (APFC).

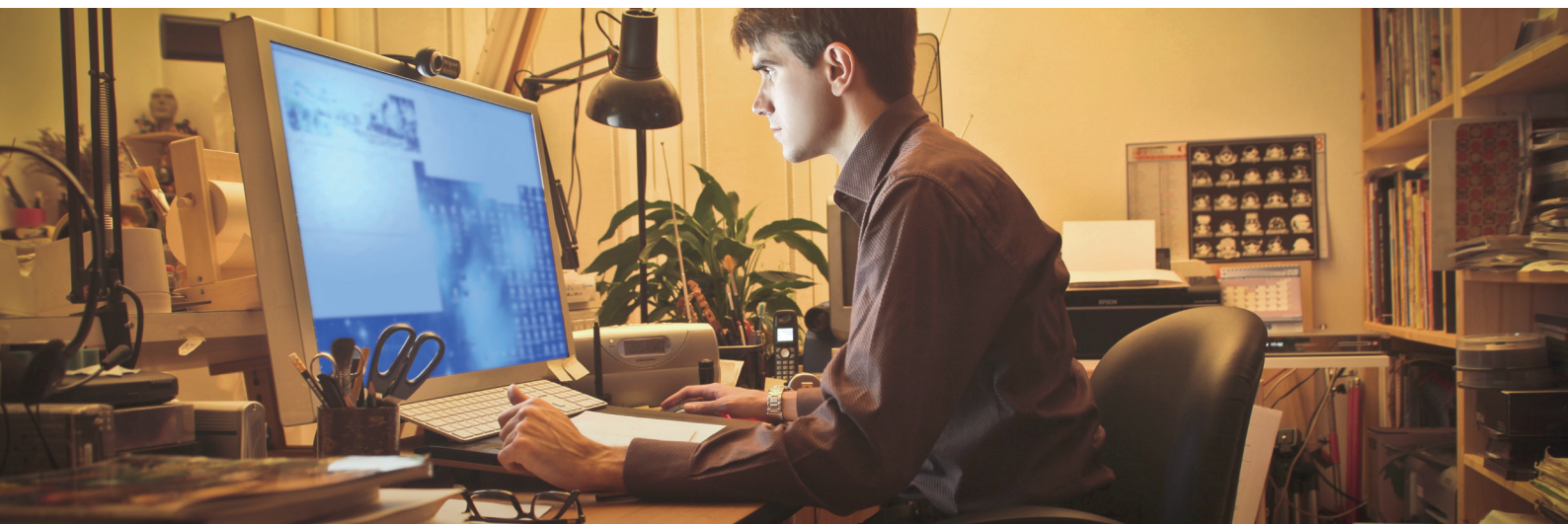
All of the 6 sockets feature overvoltage protection and 3 or 4 of them have autonomy backup for power failure situations. All of them are also conveniently orientated for easy connection of power supply transformers and are shuttered for child protection. To complete the protection, they also feature RJ45 sockets to protect telephone/ADSL/Ethernet connections from overvoltages and/or electrical noise.

And to facilitate the management and control of the UPS, the USB interface incorporates the HID protocol, which allows the configuration of parameters and the closing/hibernation of the PC. There is also the option of software packages for the monitoring and orderly closing of files for Windows, Linux and Mac.

Applications: Multiple protection against overvoltages and with backup reserve

In the event of electrical disturbances –outages, micro-cuts, overvoltages and voltage spikes– as a result of various causes – storms, lightning, excessive demand and natural disasters– the best protection for all computer users who depend on a stable and correct power supply in a UPS. Salicru's **SPS HOME** series is, thanks to its multiple sockets, the ideal protection for single-user systems and all of their associated peripherals (HDD, monitor, printer (*), NAS, router/modem/switch, etc.).

(*) Laser printers must only be connected to the overvoltage protection sockets (surge protector).



salicru

Performances

- Off-line technology.
- Multiple base design with 6 sockets.
- 3 or 4 sockets with UPS protection; all sockets with over-voltage protection.
- On/Off multifunction pushbutton.
- Self-detection of 50 or 60 Hz frequency.
- LEDs indicating mains, battery mode and battery failure.
- USB port for monitoring and file closing software.
- Telephone/ADSL line protection by RJ-45 port.
- Batteries user replaceable.
- Cold Start function.
- Anchoring for wall fixture.
- Automatic restart after each power cut and at the end of autonomy.
- Economic guarantee for connected units up to €70,000. ⁽¹⁾

(1) Only European Union countries



Compatibility with APFC loads

The vast majority of power supplies for electronic devices are switched-mode (SMPS) and they are increasingly being equipped with active power factor correction (APFC) to minimise distortion caused to the electrical line. **SPS HOME** UPSs are compatible with all devices that incorporate these functionalities.

Salicru warranty

- 2-year warranty.
- On-line registry at www.salicru.com.
- Economic guarantee.
- Replacement of defective product at user's Office/Home. ⁽¹⁾
- Batteries covered by the warranty.

(1) Consult countries with this service



Range

MODEL SCHUKO	CODE	POWER (VA / W)	NO. OF SOCKETS	DIMENSIONS (D × W × H mm)	WEIGHT (Kg)
SPS 650 HOME	693CA000001	650 / 360	6 (4 UPS + 2 Prot.)	316 × 121 × 94	2.7
SPS 850 HOME	693CA000002	850 / 490	6 (4 UPS + 2 Prot.)	316 × 121 × 94	3

MODEL UK	CODE	POWER (VA / W)	NO. OF SOCKETS	DIMENSIONS (D × W × H mm)	WEIGHT (Kg)
SPS 650 HOME UK	693CA000003	650 / 360	6 (3 UPS + 3 Prot.)	316 × 121 × 94	2.7
SPS 850 HOME UK	693CA000004	850 / 490	6 (3 UPS + 3 Prot.)	316 × 121 × 94	3

Dimensions

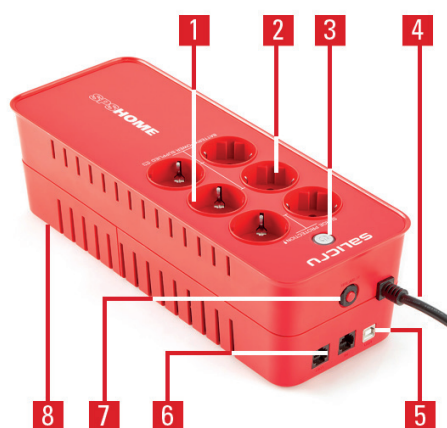


SPS 650/850 HOME UK



SPS 650/850 HOME

Connections



1. UPS backup + overvoltage protection sockets.
2. Overvoltage protection sockets.
3. On/Off button.
4. AC input.
5. USB-HID interface.
6. RJ45 telephone/ADSL/Ethernet protection.
7. Resettable protection circuit breaker.
8. Replaceable battery, battery swap.

Technical specifications

MODEL		SPS HOME
TECHNOLOGY		Off-line
FORMAT		Socket design
INPUT	Rated voltage	230 V
	Voltage range	180 ÷ 270 V
	Rated frequency	50 / 60 Hz (auto-detection)
	Protection	Resettable breaker
OUTPUT	Rated voltage	230 V
	Voltage accuracy (battery mode)	±7%
	Waveform (battery mode)	Pseudo sine wave
	Frequency	50/60 Hz (same as input)
	Frequency accuracy (battery mode)	±1Hz
	Transfer time	4 ms (typical)
	Compatibility with APFC loads	Yes
BATTERY	Battery type	Pb-Ca sealed, AGM, maintenance-free
	Recharge time	8 hours to 90%
	User replaceable battery	Yes
COMMUNICATION	Ports	USB (HID protocol)
	Monitoring software	For Windows, Linux and Mac
INDICATIONS	Type	LED
	Audible	Every 30 s for battery operation / Every 0.5 s for overload / Continuous for failure
OTHER FUNCTIONS	Self-charge	Yes, even with the device switched off
	Cold start (start-up from batteries)	Yes
	Automatic restart	Yes, after end of backup
	ADSL/fax/modem transient protector	Yes, 2 × RJ45 for tel/fax, Internet ADSL + Ethernet network 10/100 Mb
GENERAL	Operating temperature	0° C ÷ 40° C
	Relative humidity	Up to 95%, non-condensing
	Maximum operating altitude	2,400 masl
	Acoustic noise at 1 metre	<40 dB
STANDARDS	Safety	EN-IEC 62040-1
	Electromagnetic compatibility (EMC)	EN 62040-2
	Operation	EN 62040-3
	Quality and environmental management	ISO 9001 & ISO 14001

Information subject to change without notice.