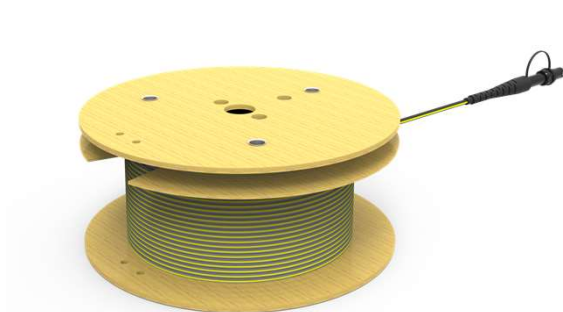


CasaLink Block Terminal (CBT) Drop Cables

Prysmian

A Brand of Prysmian Group

Product code – See tables below



DESIGN & CONSTRUCTION

- The cables are supplied on a Wooden Bobbin.
- Single fibre terminated with an SC/APC adapter
- Available in a range of lengths from 18M to 160M
- A range of cable constructions can be used
- To be used with the Casalink Block Terminal

Product Description

The CasaLink Block Terminal (CBT) Drop cables are available in various lengths using various cable designs to suit the local market. The drop cable is a single fibre design terminated at one end with an SC/APC connector, this connector is housed in a shroud and has a pulling eye to support installation. The terminated end is secured into the Casalink Block Terminal (CBT), and the unterminated end is spliced at the customer premise. You can contact your local Prysmian sales office to discuss your requirements. In addition to buying pre-terminated CBT drop cables you can also buy a termination kit that provides all the components for local termination.

Technical data

- Packing Dimensions (DxH mm): 400x180
- Packed Weight (kg): 6

CasaLink Block Terminal (CBT) Drop Cables

Prysmian

A Brand of Prysmian Group

Cable Design – TC04715v1

DESIGN & CONSTRUCTION

Optical fibre: Singlemode G.657.A1.

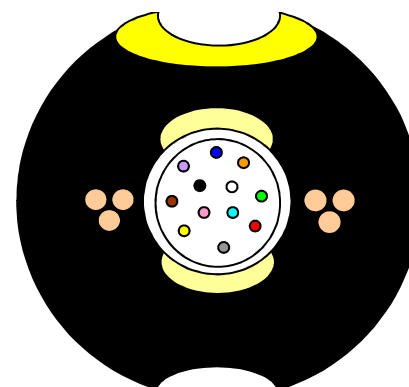
Strength member: 3 x 0.32mm brass plated steel wires.

Tube: Thermoplastic material, containing between 1 and 12 single-mode optical fibres and filled with a suitable water tightness compound.

Longitudinal Water Tightness: Water swellable elements (dry core only).

Outer Sheath: HDPE, 2 Ripcords beneath the sheath.

Grooves/stripes: Indicate planes for easy sheath removal



The design above shows 12 fibre, the drop cable only contains 1 fibre.

Cable description

This loose tube optical drop cable is design for aerial and/or duct applications and is suitable for use under 11kV power cables. The cable has a break load of 1800N and a maximum aerial span length of 95M. The table below shows the ice and wind loading for this cable. The cable also has Openreach PIA approval.

Layout		Single central tube	
Loose Tube Ø	mm	2.2	
Strength member	mm	3 x 0.32mm brass plated steel wires	
Sheath thickness	mm	1.6	
Cable Diameter	mm	6.0	
Cable Weight	kg / km	32	
Max installation tension	N	1200	
Maximum breaking load	N	1800	
Min. setting diameter	mm	120	
Temperature range	° C	Installation -20 -> +60	Operation -20 -> +60

Span (mts)	Temp	Wind and Ice Conditions							
		80 km 5 mm	100 km 5 mm	80 km 10 mm	120 km 5 mm	100 km 10 mm	80 km 15 mm	120 km 10 mm	100 km 15 mm
15	-30								
25	-30								
35	-30								
45	-30								
55	-30								
65	-30								
75	-30								
85	-30								
95	-30								

CasaLink Block Terminal (CBT) Drop Cables

Prysmian

A Brand of Prysmian Group

Part Numbers for CBT Drops using cable TC04715v1

Part Number	Length
XPCSC01138	20M
XPCSC01141	35M
XPCSC01214	65M
XPCSC01215	105M
XPCSC01159	160M
TBC	350M