

Patch Panels Cat 6A Right Angle

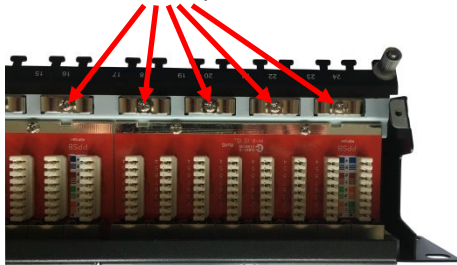


798926

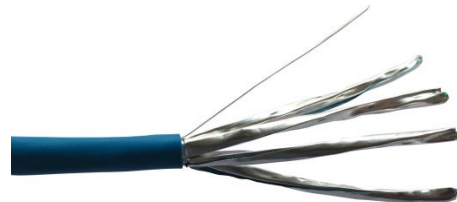


822781

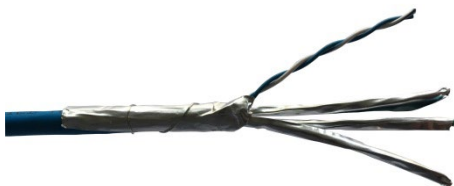
1. Remove the patch panel cover and the cable earth clamps.



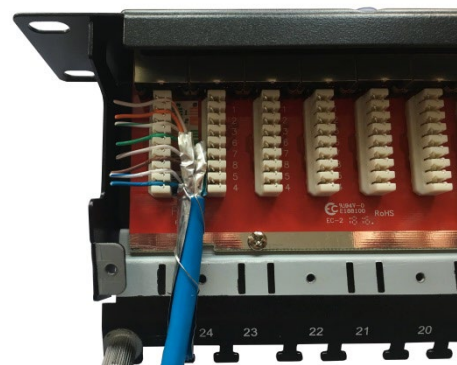
2. Remove approximately 60mm of the cable sheath, cut back the rip cord and separate the 4 pairs.



3. Identify the blue pair and carefully open the foil. Fold this foil back along the outside of the cable sheath with the silver surface on the outside. Wrap the drain wire around the outside of the foil and sheath.

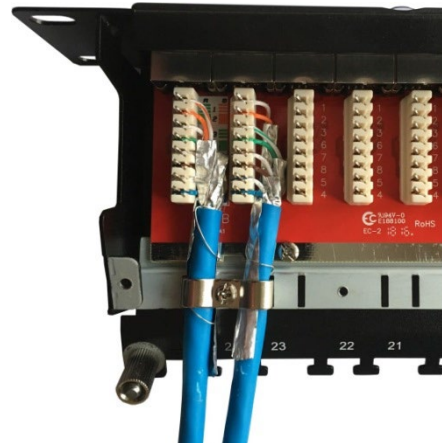
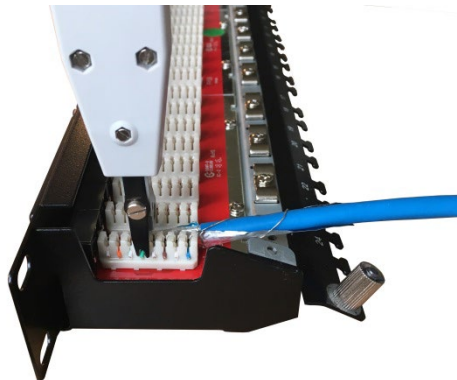


4. Dress the wires in to the appropriate coloured IDC slots following the preferred wiring configuration. For the best performance results ensure that the cable pair foils are maintained as close as possible to the point of termination.

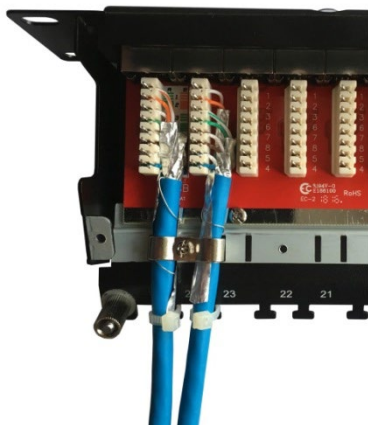


Patch Panels Cat 6A Right Angle

5. Punch down the wires using a Krone type or 110 style termination tool.
6. When adjacent cables have been terminated fit the shield clamp taking care not to over tighten the screw and crush the cables.



7. Secure the cables to the cable management using cable ties, taking care not to over tighten them.
8. When all of the cables have been terminated refit the patch panel cover. Make sure that the panel is connected to the cabinet or rack earth using the drain wire provided.



Recommended Tools

Part Number	Description	Purpose
785125	Phillips Screwdriver 80mm	Removal & fitting of cable earth clamps
786575	Side Cutters - 145mm	Cutting cable to length and trimming cable ties
993874	Cyclops Stripper	Cutting sheath
785404	Electronic Flush Cutters	Cutting foils
773118	Insertor Wire 2A	Terminating and trimming wires
770218	Insertor Wire 110	Terminating and trimming wires