

HTC Series Modular Angled Keystone Panel

Shielded – 1U 24 Port

Application/Product Description

The HTC Series Modular patch panel from HellermannTyton is a 1U panel that presents 24 keystone jacks at an angle. The panel can be used in a shielded or unshielded system and accepts the HTC Series CAT6A tool-free jack and the GST CAT6 UTP jack. The panel has been designed with 12 ports dressed to the left and 12 ports dressed to the right. The angled presentation allows patch leads to be routed out to the side management within the cabinet, reducing the need to use additional cable managers and maximising rack space and port density. The angled ports also protects the patch lead cables providing optimum bend radii for high performance

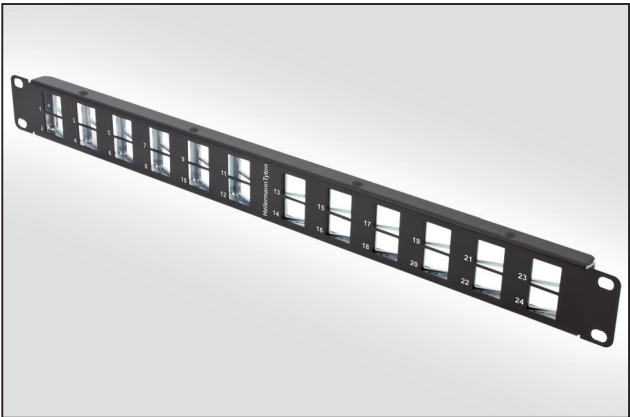
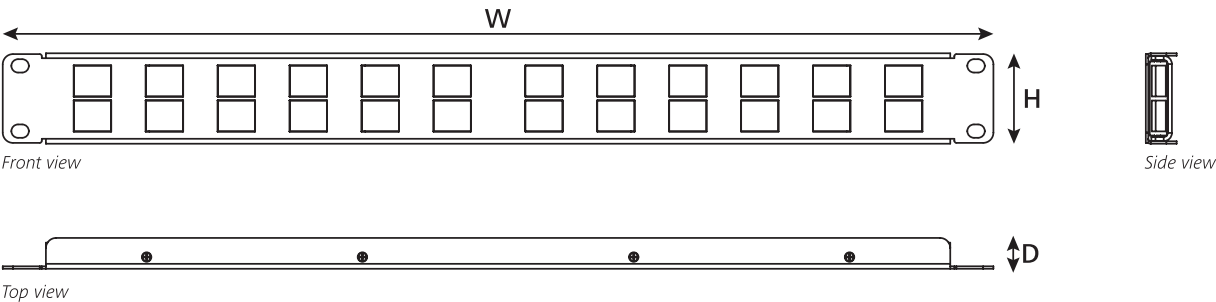
Features and Benefits:

- 1U 24 port 19" rack mountable
- Flat modular format with angled keystone presentation
- 24 ports divided left and right to support cable dressing
- Reduces the need for 19" cable management bars
- Directs patch leads to cabinet vertical managers
- Increases cabinet port density
- Can be used for Shielded and Unshielded applications
- Supplied with mounting fixings & earth wire
- Compatible rear management bar available
- Plastic free packaging
- Compatible for shielded and unshielded jacks

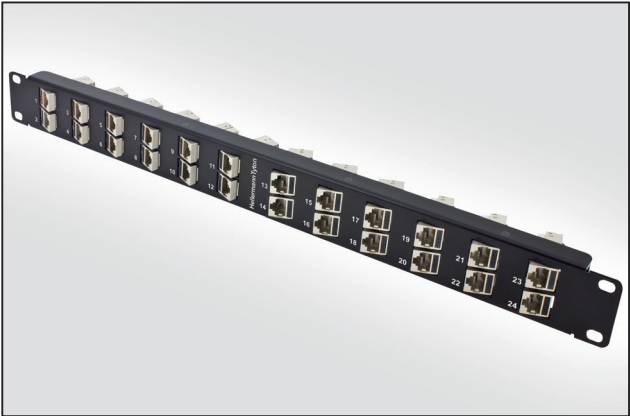
Technical Data

Style	Modular Panel		
Dimensions (mm)	H	W	D
	44	483	15
Compatible Products	HTC Series CAT6A Keystone Jack, GST UTP CAT6 Jack, HellermannTyton Rear Cable Manager		
Material	Steel front with ZCP rear mounting points		
Weight (g)	470		
Box Quality	1 pc		
Available Colours	Black		
Item Code	HTC-XXSPPA241U/BK		

Technical Diagrams



Unloaded Modular Flat Angled Keystone Panel



Loaded Modular Flat Angled Keystone Panel

Item Description	Order Info
1U 24 Port Flat Angled Keystone Patch Panel + RS	HTC-XXSPPA241U/BK

## Compatible Accessories



Rear Cable Manager



Category 6A Shielded Keystone Jack



Category 6 Unshielded Keystone Jack

Item Description	Order Info
Rear Cable Manager	APARCM1U
CAT6A Shielded Keystone Jack (12pcs)	HTC-C6AS-KJ12
CAT6 Shielded Keystone Jack (12pcs)	KSJ08SC6-12
CAT6 Unshielded Keystone Jack	GSTC6U-XX

XX - denotes colour of keystone



BK BL GN GY OR RD VI WH YL